



## User Manual



Please read this manual before using the product and keep it for future reference.



# A Reliable Power Solution Provider

## Lithium Phosphate Battery



When connected batteries (no more than 3 units for better performance) in parallel way, make sure fully charge the battery first and the differential voltage should not exceed 0.1V.

### Features

- Using the technology of lithium iron phosphate cell, superior safety, thousands of cycles, 100% DOD, under normal conditions
- Built-in automatic protection for over-charge, over discharge, over current and over temperature
- Maintenance free  
Internal cell balancing
- Lighter weight: About 40%~50% of the weight of a comparable lead acid battery.
- Can be charged using most standard lead-acid charges (set)  
Wider temperature range.
- Support for serial application expansion (up to 51.2V)

### Application

- UPS
- Solar & Wind Power System
- Lighting (LED strip etc)
- Fish finder, Kayak
- 12V router, RV/outdoor camping

Model	Product parameter	
<b>12100LRB</b>	Nominal Voltage	12.8V
	Nominal Capacity	100Ah
	Charge Voltage	14.6V
	Recommend Charger Current	50A (0.5C)
	Max.Charge Current	100A
	Max.Continuous Current	100A

<b>12200LRB</b>	Nominal Voltage	12.8V
	Nominal Capacity	200Ah
	Charge Voltage	14.6V
	Recommend Charger Current	100A (0.5C)
	Max.Charge Current	200A
	Max.Continuous Current	200A

<b>12314LRB</b>	Nominal Voltage	12.8V
	Nominal Capacity	314Ah
	Charge Voltage	14.6V
	Recommend Charger Current	100A (0.5C)
	Max.Charge Current	200A
	Max.Continuous Current	200A

<b>25100LRB</b>	Nominal Voltage	25.6V
	Nominal Capacity	100Ah
	Charge Voltage	29.2V
	Recommend Charger Current	50A (0.5C)
	Max.Charge Current	100A
	Max.Continuous Current	100A

<b>25200LRB</b>	Nominal Voltage	25.6V
	Nominal Capacity	200Ah
	Charge Voltage	29.2V
	Recommend Charger Current	100A (0.5C)
	Max.Charge Current	200A
	Max.Continuous Current	200A

## Made in China

### Operation temperature and humidity range

Charging temperature:

10°C~+45°C,

charge shall be with a little current (recommend 0.1°C).

If the environment temperature is lower than 0°C, charge shall be prohibited.

Maximum relative humidity : 90%

Discharge temperature:

0°C~+55°C,

Maximum relative humidity : 90%

### Storage temperature and humidity range

- Three months:  
-20°C~+55 °C.  
humidity 60%±20%
- Six months:  
23±5°C.  
humidity 60%±20%
- Long-term storage:  
23±5°C,  
humidity 60%±20%

## WUYA APP Instructions for Use

### 1. Download APP

1.1 QR code download: Open your phone's Browser/Camera, scan the QR code to download and install the application.



1.2 Download from the appstore:

1.2.1 Apple phone users: Open the App Store, search for the "WUYA" application, download and install it.

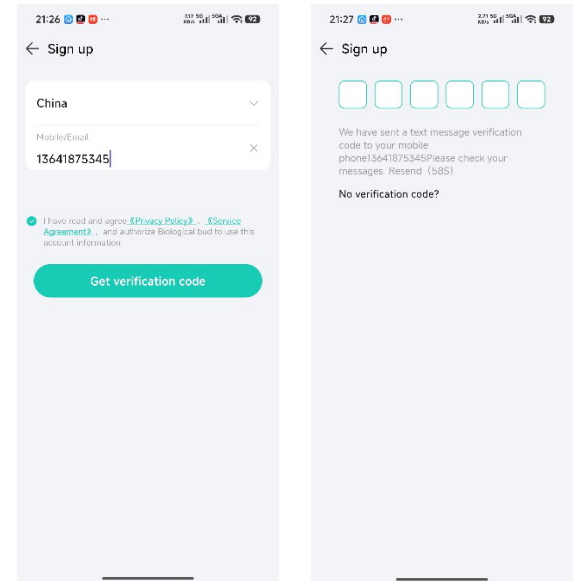
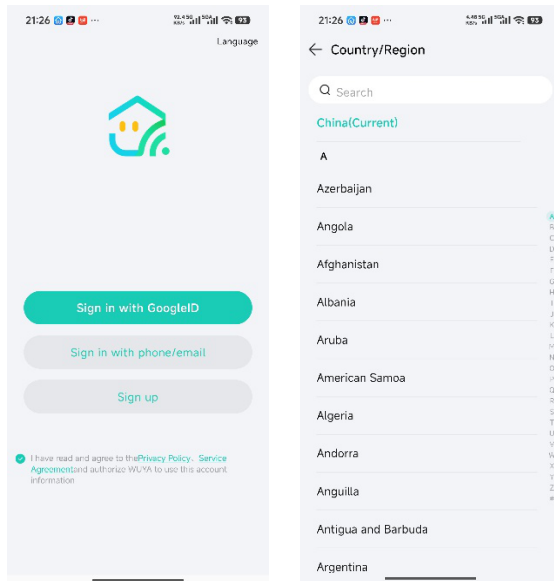


1.2.2 For Android phone users: Open Google Play, search for the "WUYA" application, download and install it.



## 2. Login & Sign up

After opening the "WUYA" APP, click on [Sign up], then click on [Country/Region] to select your country, enter your phone number or email address, click on [Get Verification Code], input the verification code received via phone or email, and finally click on [Confirm] to complete the registration. Click on [Login] to successfully log in to the APP.

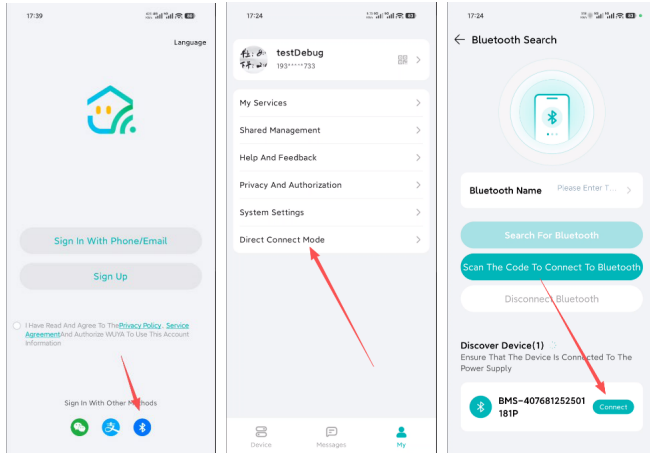


## 3. Add Device

**3.1 Turn on the device:** Confirm that the equipment is in normal working condition.

**3.3.2 Add Device:** After entering the APP, complete the device addition according to the following diagram.

- When the user is not logged in to the APP, they can click the [Bluetooth] icon on the login page to enter the Bluetooth search page;
- When the user is logged into the APP, they can click on [Device Direct Connection Mode] on the [My] page to enter the Bluetooth search page;
- After scanning for devices on the [Bluetooth Search] page, click [Connect].



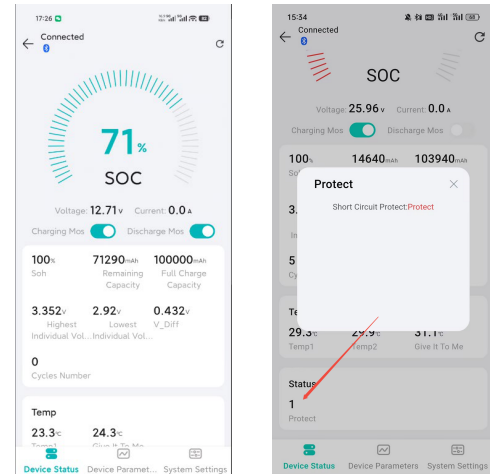
## 4. Device Details

### 4.1 Lead-to-lithium version

#### 4.1.1 SummaryData

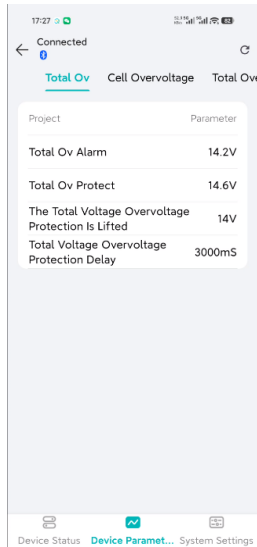
After clicking on the corresponding device, users can enter the summary data interface and view information such as device status, capacity, voltage, temperature, etc. Click the [refresh button] in the upper right corner to refresh the current interface.

**Note:** After clicking the [refresh button], you need to wait a few seconds for the interface to refresh the latest data.



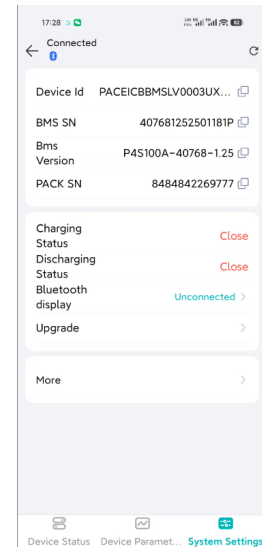
#### 4.1.2 Device Parameters

After clicking [Device Parameters] at the bottom of the summary data interface, users can view the parameters of the current device. If they need to modify the device parameters, they can return to the modification page after entering the permission password on the [System Settings] page.



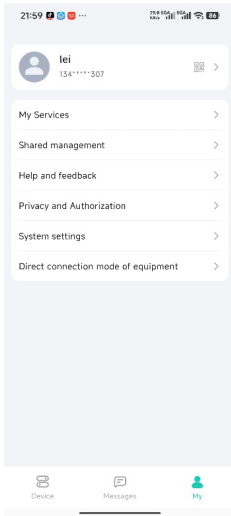
#### 4.1.3 System Settings

Users can view the system information of the device by clicking on [System Settings], and can apply for input permission password by clicking on [More].



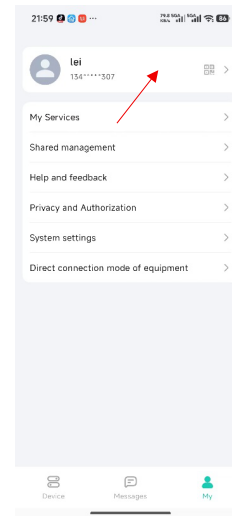
#### 5. Personal Center

Clicking on [My] at the bottom of the main interface will take you to the personal center interface.



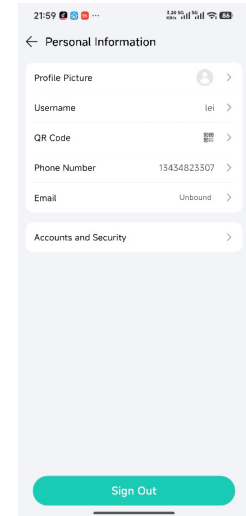
## 5.1 Personal Information

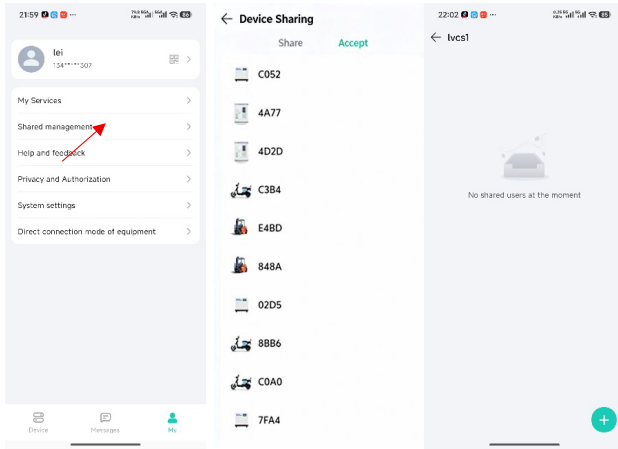
Users can click on the [personal information] option above to enter the personal information page, where they can set their avatar, username, phone number, and email information. Clicking on the [QR code] option will display the current user's QR code, which can be scanned to share the device. After clicking on the [account and security] options, users can perform password changes and account cancellation operations. Click below to [log out] and return to the login and registration interface.



## 5.2 Shared Management

Users can click on [Share Management] to view the information of shared and received devices for their current account. After clicking on the device on the Share interface, users can click on the [+] to share the device with others.





### 5.3 System Settings

Users can view all privacy and authorization information of the app in the system settings interface, as well as set some options for the app. Click to [upload logs] to upload app logs and user data information.

